



# Tactile Warning Systems

## Industry Leading TekWay Tactile Warning Systems

Since 2004 TekWay Tactile Warning Systems are considered a 'proven system and solution'. TekWay ADA Domes possess the perfect combination of outstanding physical properties, aesthetics and ease of installation. They are the only concrete-based Dome-Tiles available in authentic Federal colors such as Federal Standard 595 - #33538 (Yellow) or # 27925 (Bright White).

StrongGo Industries offer a full complement of TekWay Tactile Warning Systems, which are fully ADA compliant and right for any job large or small. These durable, aesthetically pleasing ADA Domes are available in almost all Federal colors, sizes, dome spacing and dome configurations.

All TekWay ADA Domes are market-priced and by far the best buy when you consider the lifetime of your project.



CHALLENGE	INNOVATIONS	OUTCOME	COMPLIANCE	SAFETY
Heavy Foot and Wheel Traffic	Nano-engineered polymer concrete	Durability & Performance	✓	✓
Higher Vibration and Stresses	TekWay Anchor System	Securely Anchored Tiles	✓	✓
Design requires Cutting of Tile	Structural Fiber-Reinforcement throughout the Tile	Guaranteed Integrity of Tile	✓	✓



All TekWay ADA Domes are designed to withstand inclement weather as well as heavy foot traffic as experienced on curb ramps. Even occasional car-traffic is not an issue for TekWay ADA Domes. Please, be informed and allow yourself to make an intelligent decision on the dome-specification for your next project.

- Fully ADA compliant with perfectly defined and dimensioned Truncated Domes.
- The most durable and also most reliable ADA Domes available on the market.
- 100% developed and manufactured in the U.S.A.
- Reliable and proven device of orientation for citizens with zero or low vision.
- Completely customizable to fit almost any job.





## Nano-Tech Materials

TekWay ADA Dome-Tile are made of nano-engineered polymer concrete to achieve a combination of physical, chemical and mechanical properties to surpass standard concrete or plastic domes. The NTM makes it possible to form extremely defined and durable domes, retain color throughout, maintain high slip-resistance and tolerate hot and cold conditions including large temperature swings.



**Cross-Section of a perfectly shaped dome**

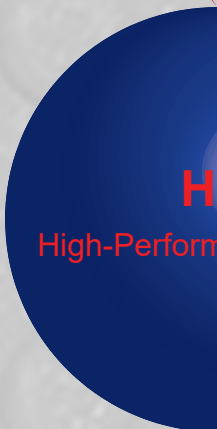


TekWay ADA Domes, are designed with the ability to custom cut and fit tiles in the field to meet specific architectural design requirements. All TekWay ADA products are composed of nano-engineered polymer concrete along with a continuous fiber reinforced membrane. This combination allows high flexural strengths and gives installers the ability to easily core and/or saw cut tiles using a standard diamond blade without concerns of chipping and cracking.

## High Performance Domes

As shown, the independently certified ASTM Test Results guarantee that TekWay ADA Domes is the proven system to produce long lasting durability and reliability.

The extremely low water absorption rate of less than 0.25% (Standard concrete has over 5%) and the outstanding compression strength value of greater than 12,000psi (standard concrete is ~3,500psi) together enable TekWay High-Performance ADA Domes to withstand the elements, to resist deterioration, and deliver compliant and reliable warning and direction to the visually impaired users for years to come.





**VFI**  
Void-Free Installation



**Void-Free Installation**

ADA Dome-Tiles must be installed void-free for a solid and uniform attachment to the substrate. The proven TekWay Anchor System and Installation Instructions together ensure the permanent attachment of the Dome-Tile to the substrate needed to withstand the conditions. A true monolithic structure between the Dome-Tile and the substrate is guaranteed.



**TekWay Anchor System**

TekWay ADA Domes may be specified in locations where there is potential for moderate vehicle traffic. In such locations, these domes are subjected to extreme vertical loads and lateral shear pressures created by vehicle tires being rotated while in motion or in a static mode. TekWay ADA Domes tiles can handle these loads providing a Void-Free Installation has been achieved.



CERTIFIED ASTM - TESTING DATA	Physical Property	Test Method	Results
	Compression Strength	ASTM C 39	>12,000psi
	Abrasion Resistance	ASTM C 418	<= 0.03 cm <sup>3</sup> /cm <sup>2</sup>
	Freeze / Thaw	ASTM C 1262	=0.00 %
	Water Absorption	ASTM C 97	<0.25 %
	Slip Resistance	ASTM C 1028	Fa>=0.80
	Flexural Strength	ASTM C 947	>2,500 psi
	Tensile Strength	ASTM C 496	>1,900 psi



Another frequent application where Detectable Warning Tiles are used is adjacent to multiple business or residential entrances where the sidewalk and the street are at the same elevation and not separated by a curb. This design requires a continuous run of ADA Domes to separate vehicle traffic from pedestrians. These Domes must be a solid installation to sustain occasional vehicle traffic and be absolutely 'flush' with both the street and the sidewalk to avoid tripping hazards.

Color changes in Detectable Warning Tiles can be used to denote such items as entrances of businesses or street crossings.



**Available Sizes in either narrow (1.67") or wide (2.35") spacing**



12" x 12"

24" x 36"

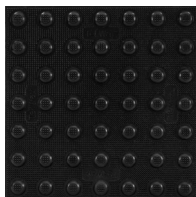
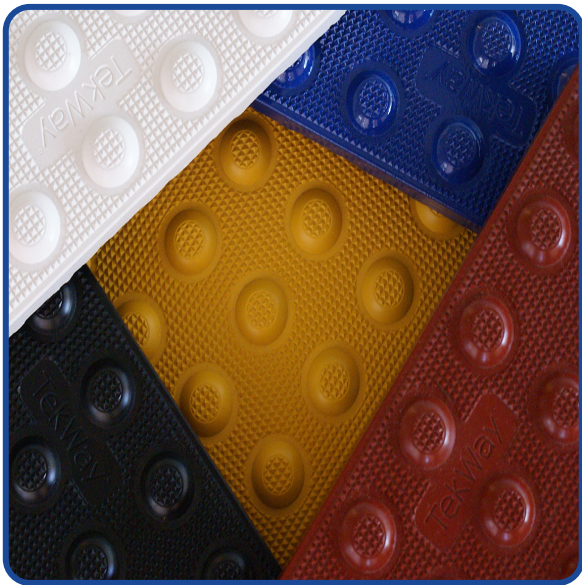
24" x 24"

30" x 36"

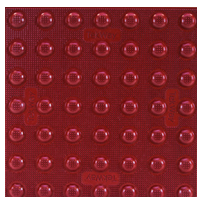
24" x 30"

24" x 48"

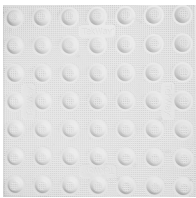
**Authentic Federal Colors \***



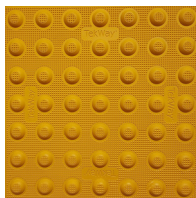
Black



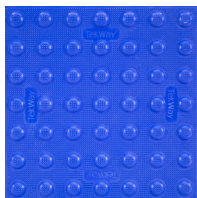
Red



White



Yellow



Blue

\* All FED-STD-595 Colors are available, Specify requested number upon ordering

Please call **1-866-439-3216** or email at **csd@stronggo.com**  
 StrongGo® Industries, 3296 E. Hemisphere Loop, Tucson, Arizona, 85706

Visit our website at: **www.stronggo.com** or scan QR Code

